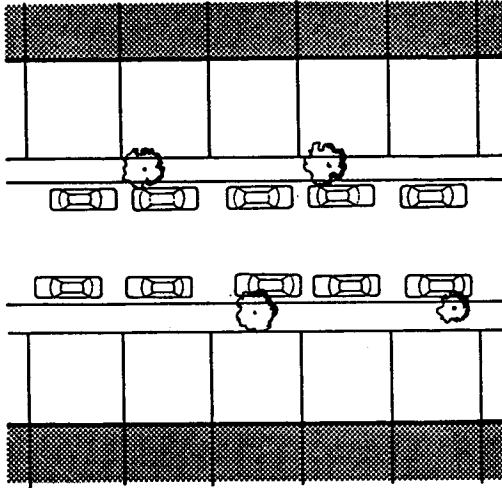


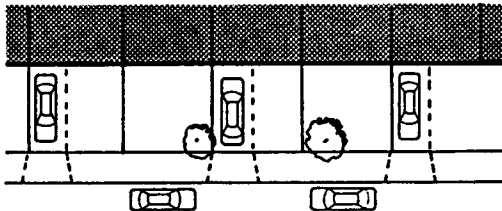
Parking Intensity and Environmental Quality

On Street Parking Only



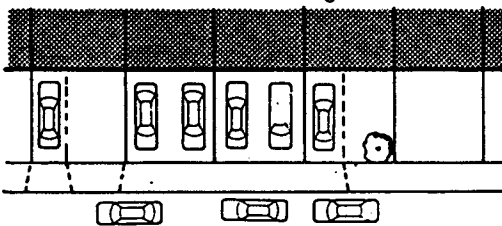
- front gardens in amenity use
- Allows 1 car per house, or mix of ownership levels

Front Garden Parking



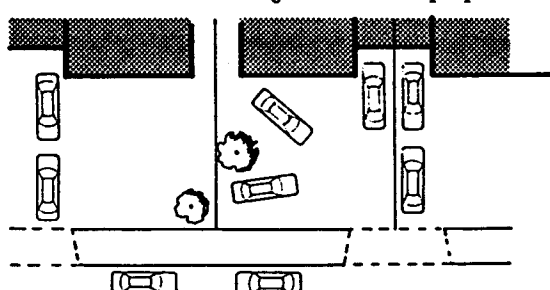
- reduces on-street capacity
- reduces garden amenity, greenery
- removes pedestrians' exclusive rights to the footway
- reduces parking available to all users
- produces ad-hoc, irregular pattern

Intensive Front Garden Parking



- multi-car ownership leads to "car stacking"
- street scene dominated by vehicles
- fences/walls removed
- footway integrity eroded

Intensification of Parking, houses with purpose-built drives, large gardens



- paving of garden space
- loss of trees and shrubs