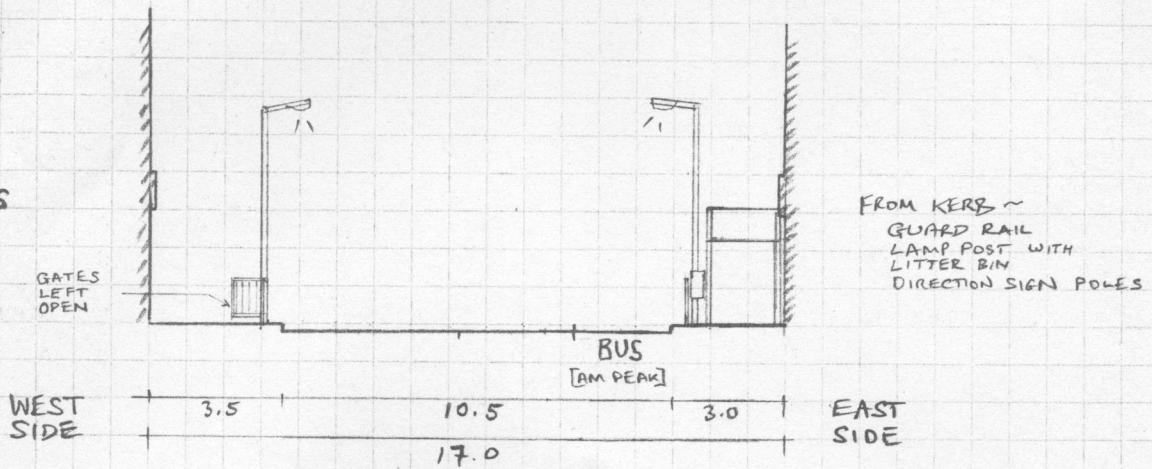
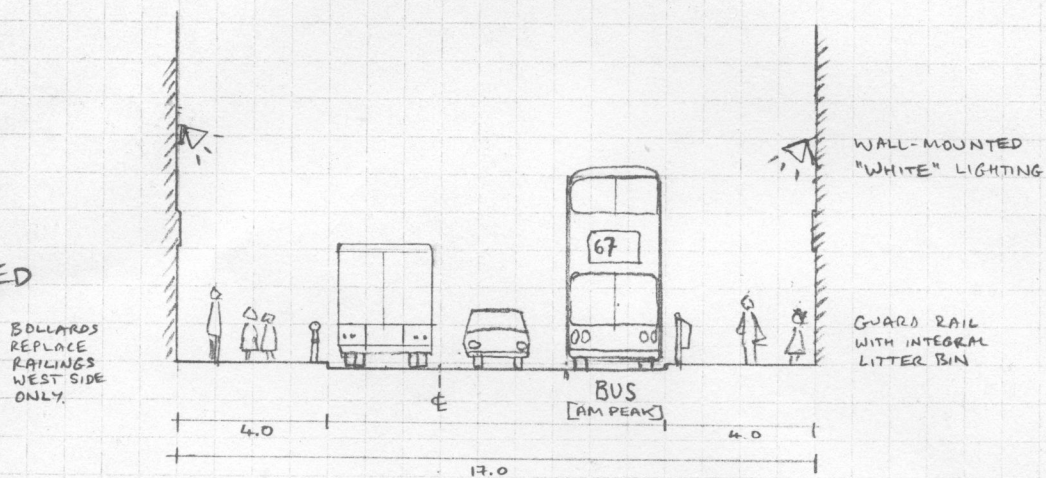


# A10 PROFILE AT 35 KINGSLAND HIGH ST.

EXISTING



REVISED



NOTE: THESE PROFILES ARE AT NARROWEST PART OF KINGSLAND HIGH STREET. THE 17.0M WIDTH IS ONLY 90M IN LENGTH FROM BOLEYN RD TO RIDLEY ROAD. ELSEWHERE, MIN WIDTH IS 18.5M, WHICH CAN ACCOMMODATE A SERVICING BAY [BELOW].

REVISED PROFILE FOR 18.5M LENGTHS [EXCEPT AT CROSSINGS]

